



Direct Dial/Ext: 03000 416749
e-mail: andrew.tait@kent.gov.uk
Ask for:
Date: 8 July 2021

Dear Member

KENT FLOOD RISK MANAGEMENT COMMITTEE - THURSDAY, 8 JULY 2021

I am now able to enclose, for consideration at next Thursday, 8 July 2021 meeting of the Kent Flood Risk Management Committee, the following report(s) that were unavailable when the agenda was printed.

Agenda Item No

7

**Short Term Adaptation for Long Term Resilience to Climate Change -
Presentation by Tom Hammond, KCC Environmental Projects (Pages 1 - 10)**

Yours sincerely

A handwritten signature in black ink, appearing to read 'Ben Watts', is written over a faint, larger signature.

Benjamin Watts
General Counsel

This page is intentionally left blank

The Implementation Gap and Adaptive Planning: *The STAR2Cs Solution*

Page 1



Interreg 
2 Seas Mers Zeeën
STAR2Cs

European Regional Development Fund

Agenda Item 7

The Climate Challenge

Climate change: UK to speed up target to cut carbon emissions

By Roger Harrabin
BBC environment analyst

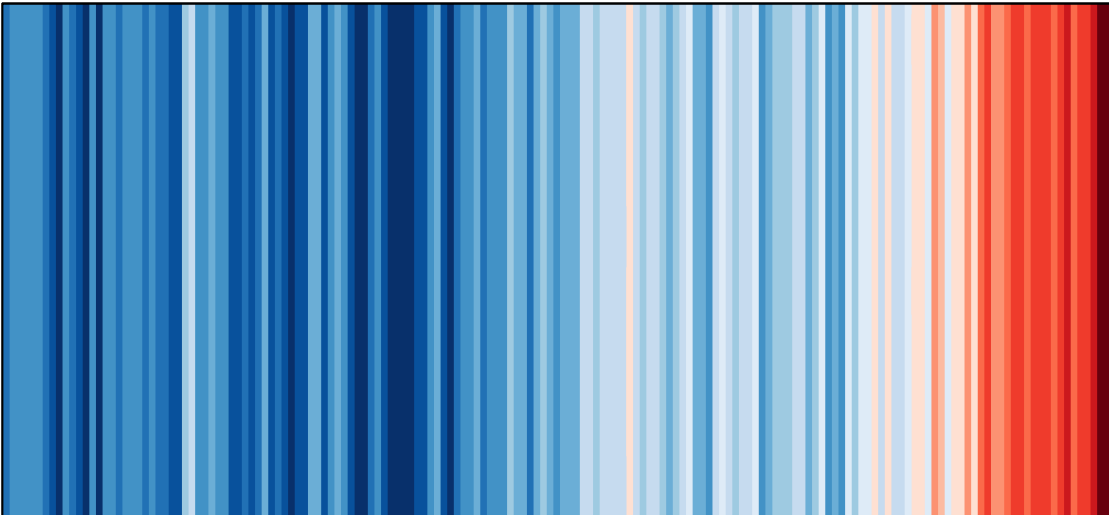
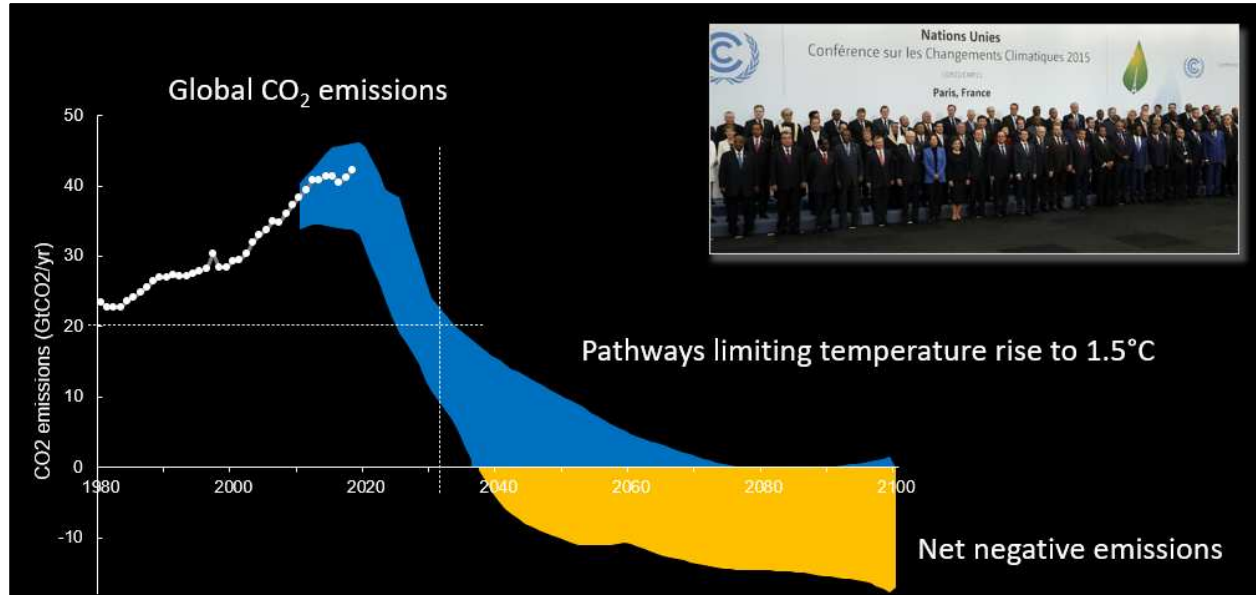
20 April | Comments

Climate change



Page 2

Radical new climate change commitments will set the UK on course to cut carbon emissions by 78% by 2035, the UK government has announced.



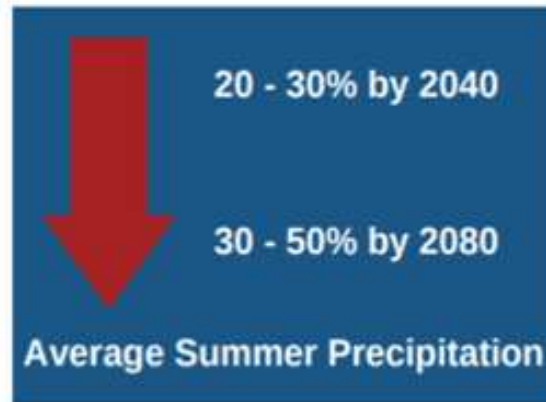
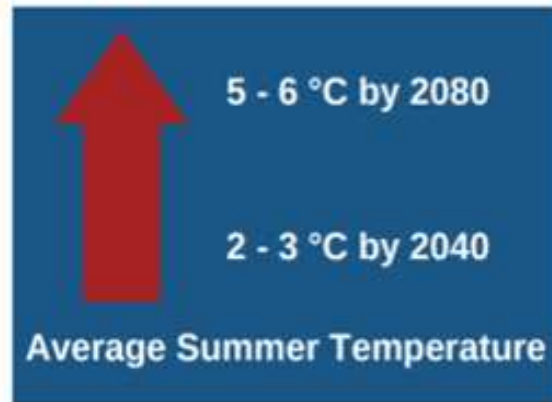
The UK's first climate change refugees?

Are these the UK's first climate change refugees?

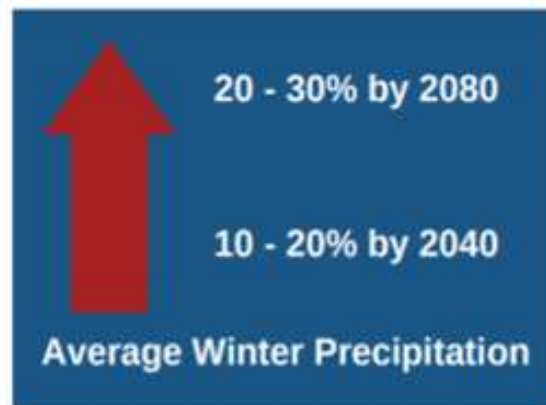
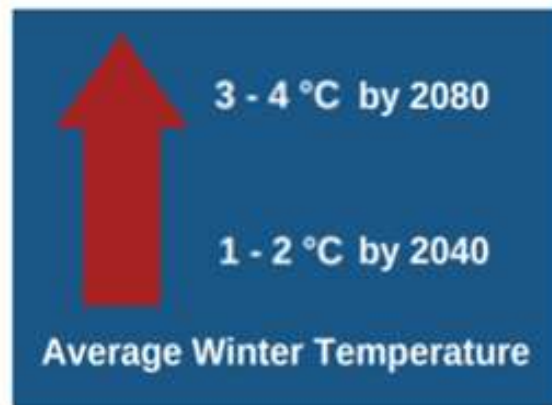
The residents of Fairbourne, a village in Gwynedd, have been labelled as such after the government announced they would have to leave their homes.

Future climate changes (UKCP18)

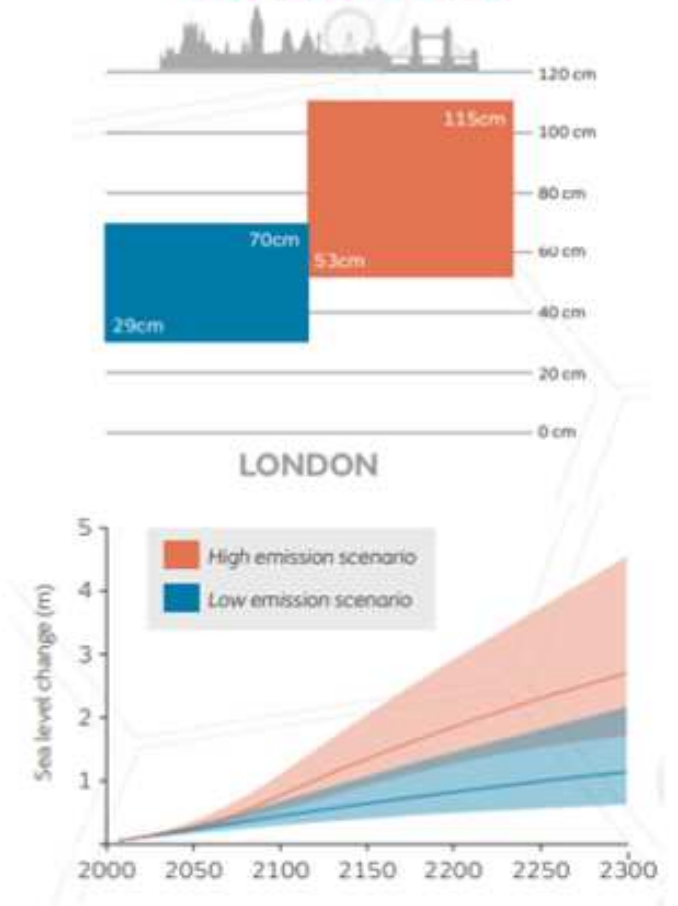
**HOTTER
DRIER
SUMMERS**



**WARMER
WETTER
WINTERS**



SEA LEVEL RISE



TAR2Cs Objectives



The STAR2Cs approach

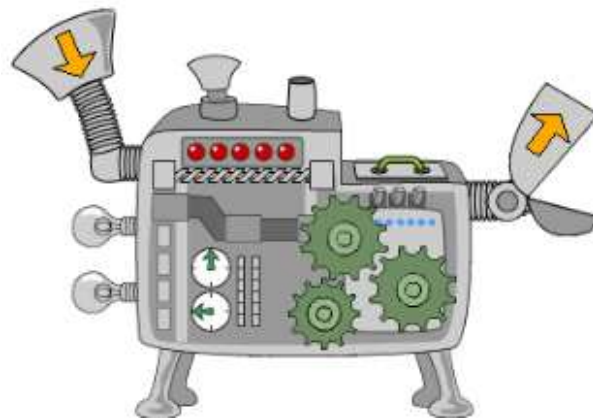
STAR2Cs aimed to establish how adaptation can be delivered as part of the business planning and decision-making process.

Page 5

Co-design

Customisable

Flexibility



Cost effectiveness







Multi-functionality

Integration

Incremental

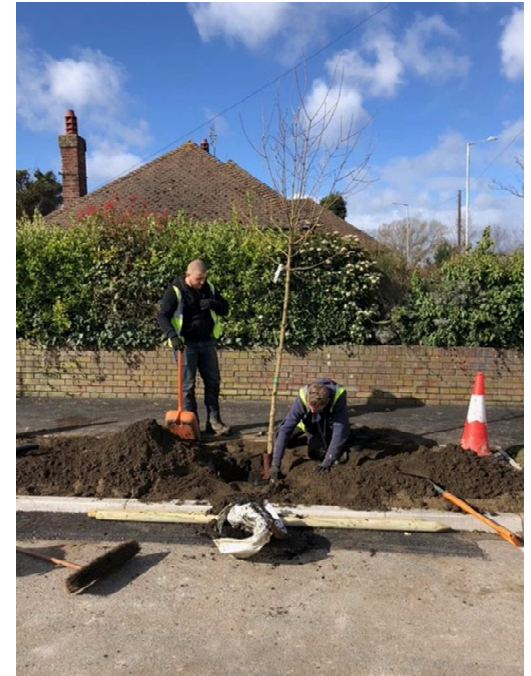
ent Climate Change Risk Assessment



		High temperatures	Storm events	Flooding and coastal change	Water shortages	Other
	Agriculture	Medium	High	Medium	Medium	Chemical leaching
	Industry	Medium		High		
	People & built environment	High		High		Air quality
	Natural Environment	High	High	High	Medium	
	Transport	High	High	High		Soil instability
	Utilities	High	Medium	Medium		Drought Landslips

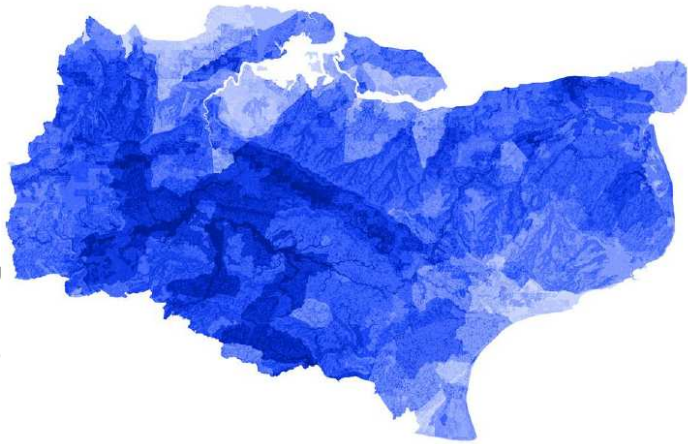


Our climate is changing. We need to adapt now.



CC's H2O work

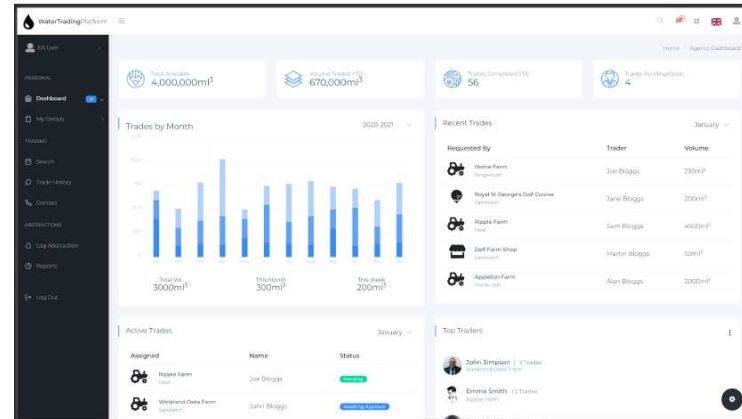
Page 8



Spatial Risk Assessment for Water



Rainwater Harvesting Tool



Water Trading Scheme Pilot

CC's H2O work

Page 9



Margate Cool Towns Pilot



This page is intentionally left blank